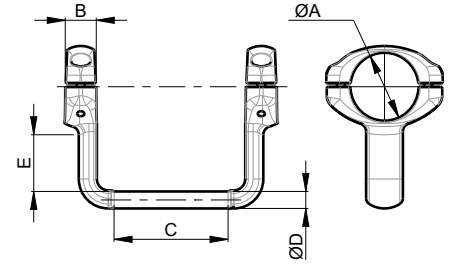


## SGP02

TUBE

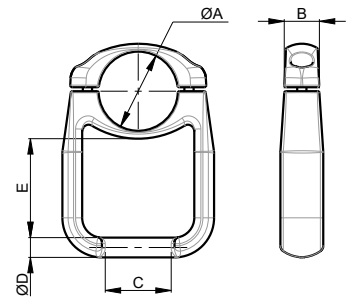


UP TO **400kV** **A2-70**

PART NUMBER	A	COVERS A	B	C	D	E	BOLTS A
SGP.02.010	90 - 100	2	46	200	30	125	M12
SGP.02.020	120	2	53	200	30	125	M14
SGP.02.030	140 - 150	2	53	200	30	110	M14
SGP.02.040	160-170	2	53	200	30	100	M14
SGP.02.050	200	2	58	200	30	145	M16
SGP.02.060	250	2	58	200	30	145	M16
SGP.02.070	300	2	58	200	30	120	M16
SGP.02.500	3"IPS (88,9mm)	2	46	200	30	125	M12
SGP.02.510	3,5"IPS (101,6mm)	2	46	200	30	125	M12
SGP.02.520	4"IPS (114,3mm)	2	53	200	30	125	M14
SGP.02.530	5"IPS (141,3mm)	2	53	200	30	110	M14
SGP.02.540	6"IPS (168,2mm)	2	53	200	30	100	M14
SGP.02.550	8"IPS (219mm)	2	58	200	30	135	M16

## SGP03

TUBE



UP TO **400kV** **A2-70**

PART NUMBER	A	COVERS A	B	C	D	E	BOLTS A
SGP.03.010	50 - 60	1	46	100	30	70	M12
SGP.03.020	70 - 80	1	46	100	30	70	M12
SGP.03.030	90 - 100	1	46	100	30	125	M12
SGP.03.040	120	1	53	100	30	100	M14
SGP.03.050	140 - 150	1	53	100	30	95	M14
SGP.03.060	160-170	1	53	200	30	95	M14
SGP.03.070	200	1	58	200	30	95	M16
SGP.03.080	250	1	58	200	30	95	M16
SGP.03.090	300	1	58	200	30	95	M16
SGP.03.500	2"IPS (60,3mm)	1	46	100	30	70	M12
SGP.03.510	2,5"IPS (73mm)	1	46	100	30	70	M12
SGP.03.520	3"IPS (88,9mm)	1	46	100	30	125	M12
SGP.03.530	3,5"IPS (101,6mm)	1	46	100	30	125	M12
SGP.03.540	4"IPS (114,3mm)	1	53	100	30	100	M14
SGP.03.550	5"IPS (141,3mm)	1	53	200	30	95	M14
SGP.03.560	6"IPS (168,2mm)	1	53	200	30	95	M14
SGP.03.570	8"IPS (219mm)	1	58	200	30	95	M16