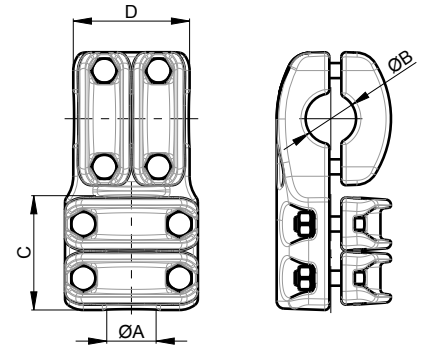


JT01

CABLE-CABLE



UP TO
230kV

BIMET
CUPAL or TIN

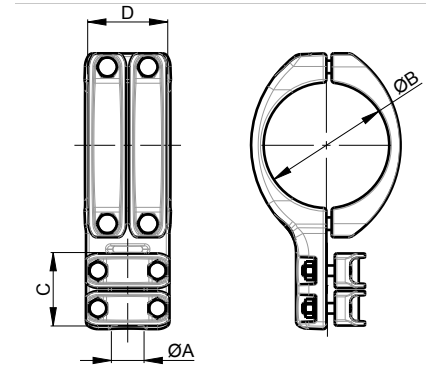
A2-70

PART NUMBER	A	B	COVERS A	C	COVERS B	D	BOLTS A	BOLTS B
JT.01.010	16,0 - 21,6	16,0 - 21,6	2	66	2	68	M8	M8
JT.01.020	16,0 - 21,6	21,6 - 29,6	2	66	2	76	M8	M10
JT.01.030	16,0 - 21,6	29,6 - 37,6	2	66	2	76	M8	M10
JT.01.040	21,6 - 29,6	16,0 - 21,6	2	74	2	68	M10	M8
JT.01.050	21,6 - 29,6	21,6 - 29,6	2	74	2	76	M10	M10
JT.01.060	21,6 - 29,6	29,6 - 37,6	2	74	2	76	M10	M10
JT.01.070	29,6 - 37,6	16,0 - 21,6	2	74	2	68	M10	M8
JT.01.080	29,6 - 37,6	21,6 - 29,6	2	74	2	76	M10	M10
JT.01.090	29,6 - 37,6	29,6 - 37,6	2	74	2	76	M10	M10



JT02

CABLE - TUBE

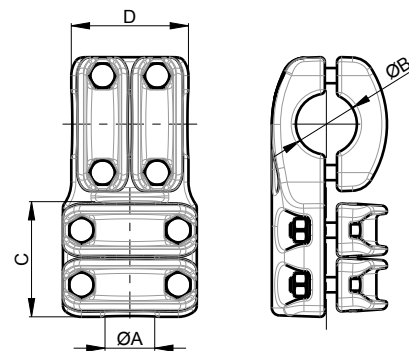


UP TO **230kV** **BIMET** CUPAL or TIN **A2-70**

PART NUMBER	A	B	COVERS A	C	COVERS B	D	BOLTS A	BOLTS B
JT.02.010	16,0 - 21,6	30 - 40	2	66	2	76	M8	M10
JT.02.020	16,0 - 21,6	50 - 60	2	66	2	82	M8	M12
JT.02.030	16,0 - 21,6	70 - 80	2	66	2	82	M8	M12
JT.02.040	16,0 - 21,6	90 - 100	2	66	2	82	M8	M12
JT.02.050	16,0 - 21,6	120	2	66	2	82	M8	M12
JT.02.060	16,0 - 21,6	140 -150	2	66	2	82	M8	M12
JT.02.110	21,6 - 29,6	30 - 40	2	74	2	76	M10	M10
JT.02.120	21,6 - 29,6	50 - 60	2	74	2	82	M10	M12
JT.02.130	21,6 - 29,6	70 - 80	2	74	2	82	M10	M12
JT.02.140	21,6 - 29,6	90 - 100	2	74	2	82	M10	M12
JT.02.150	21,6 - 29,6	120	2	74	2	82	M10	M12
JT.02.160	21,6 - 29,6	140 -150	2	74	2	82	M10	M12
JT.02.210	29,6 - 37,6	30 - 40	2	74	2	76	M10	M10
JT.02.220	29,6 - 37,6	50 - 60	2	74	2	82	M10	M12
JT.02.230	29,6 - 37,6	70 - 80	2	74	2	82	M10	M12
JT.02.240	29,6 - 37,6	90 - 100	2	74	2	82	M10	M12
JT.02.250	29,6 - 37,6	120	2	74	2	82	M10	M12
JT.02.260	29,6 - 37,6	140 -150	2	74	2	82	M10	M12
JT.02.500	16,0 - 21,6	2"IPS (60,3mm)	2	66	2	82	M8	M12
JT.02.510	16,0 - 21,6	2,5"IPS (73mm)	2	66	2	82	M8	M12
JT.02.520	16,0 - 21,6	3"IPS (88,9mm)	2	66	2	82	M8	M12
JT.02.530	16,0 - 21,6	3,5"IPS (101,6mm)	2	66	2	82	M8	M12
JT.02.540	16,0 - 21,6	4"IPS (114,3mm)	2	66	2	82	M8	M12
JT.02.550	16,0 - 21,6	5"IPS (141,3mm)	2	66	2	82	M8	M12
JT.02.580	21,6 - 29,6	2"IPS (60,3mm)	2	74	2	82	M8	M12
JT.02.590	21,6 - 29,6	2,5"IPS (73mm)	2	74	2	82	M8	M12
JT.02.600	21,6 - 29,6	3"IPS (88,9mm)	2	74	2	82	M8	M12
JT.02.610	21,6 - 29,6	3,5"IPS (101,6mm)	2	74	2	82	M8	M12
JT.02.620	21,6 - 29,6	4"IPS (114,3mm)	2	74	2	82	M8	M12
JT.02.630	21,6 - 29,6	5"IPS (141,3mm)	2	74	2	82	M8	M12
JT.02.660	29,6 - 37,6	2"IPS (60,3mm)	2	74	2	82	M8	M12
JT.02.670	29,6 - 37,6	2,5"IPS (73mm)	2	74	2	82	M8	M12
JT.02.680	29,6 - 37,6	3"IPS (88,9mm)	2	74	2	82	M8	M12
JT.02.690	29,6 - 37,6	3,5"IPS (101,6mm)	2	74	2	82	M8	M12
JT.02.700	29,6 - 37,6	4"IPS (114,3mm)	2	74	2	82	M8	M12
JT.02.710	29,6 - 37,6	5"IPS (141,3mm)	2	74	2	82	M8	M12

JT03

STUD OR TUBE - CABLE



UP TO
230kV

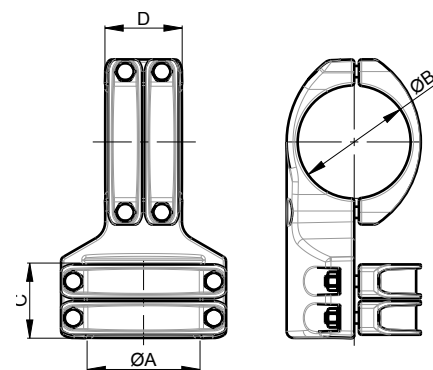
BIMET
CUPAL or TIN

A2-70

PART NUMBER	A	B	COVERS A	C	COVERS B	D	BOLTS A	BOLTS B
JT.03.010	30	16,0 - 21,6	2	74	2	68	M10	M8
JT.03.020	30	21,6 - 29,6	2	74	2	68	M10	M10
JT.03.030	30	29,6 - 37,6	2	74	2	68	M10	M10
JT.03.040	40	16,0 - 21,6	2	74	2	76	M10	M8
JT.03.050	40	21,6 - 29,6	2	74	2	76	M10	M10
JT.03.060	40	29,6 - 37,6	2	74	2	76	M10	M10
JT.03.070	50	16,0 - 21,6	2	80	2	76	M12	M8
JT.03.080	50	21,6 - 29,6	2	80	2	76	M12	M10
JT.03.090	50	29,6 - 37,6	2	80	2	76	M12	M10
JT.03.100	60	16,0 - 21,6	2	80	2	76	M12	M8
JT.03.110	60	21,6 - 29,6	2	80	2	76	M12	M10
JT.03.120	60	29,6 - 37,6	2	80	2	76	M12	M10

JT04

TUBE - TUBE



UP TO
230kV

BIMET
CUPAL or TIN

A2-70

PART NUMBER	A	B	COVERS A	C	COVERS B	D	BOLTS A	BOLTS B
JT.04.010	30 - 40	30 - 40	2	74	2	76	M10	M10
JT.04.020	50 - 60	50 - 60	2	80	2	82	M12	M12
JT.04.030	70 - 80	70 - 80	2	80	2	82	M12	M12
JT.04.040	90 - 100	90 - 100	2	80	2	82	M12	M12
JT.04.050	120	120	2	80	2	82	M12	M12
JT.04.060	140 - 150	140 - 150	2	80	2	82	M12	M12
JT.04.500	2"IPS (60,3mm)	2"IPS (60,3mm)	2	80	2	82	M12	M12
JT.04.510	2,5"IPS (73mm)	2,5"IPS (73mm)	2	80	2	82	M12	M12
JT.04.520	3"IPS (88,9mm)	3"IPS (88,9mm)	2	80	2	82	M12	M12
JT.04.530	3,5"IPS (101,6mm)	3,5"IPS (101,6mm)	2	80	2	82	M12	M12
JT.04.540	4"IPS (114,3mm)	4"IPS (114,3mm)	2	80	2	82	M12	M12
JT.04.550	5"IPS (141,3mm)	5"IPS (141,3mm)	2	80	2	82	M12	M12

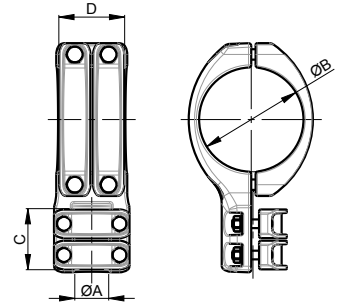
JT05

STUD - TUBE

UP TO
230kV

BIMET
CUPAL or TIN

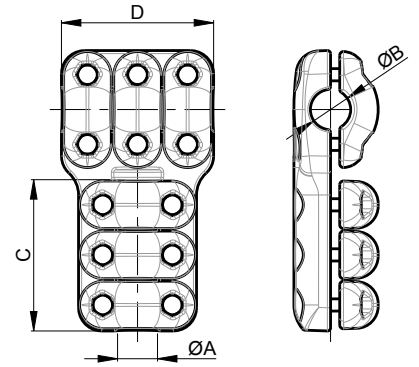
A2-70



PART NUMBER	A	B	COVERS A	C	COVERS B	D	BOLTS A	BOLTS B
JT.05.010	30	30 - 40	2	74	2	74	M10	M10
JT.05.020	30	50 - 60	2	74	2	80	M10	M12
JT.05.030	30	70 - 80	2	74	2	80	M10	M12
JT.05.040	30	90 - 100	2	74	2	80	M10	M12
JT.05.050	30	120	2	74	2	80	M10	M12
JT.05.060	30	140 -150	2	74	2	80	M10	M12
JT.05.110	40	30 - 40	2	74	2	74	M10	M10
JT.05.120	40	50 - 60	2	74	2	80	M10	M12
JT.05.130	40	70 - 80	2	74	2	80	M10	M12
JT.05.140	40	90 - 100	2	74	2	80	M10	M12
JT.05.150	40	120	2	74	2	80	M10	M12
JT.05.160	40	140 -150	2	74	2	80	M10	M12
JT.05.210	50	30 - 40	2	80	2	74	M12	M10
JT.05.220	50	50 - 60	2	80	2	80	M12	M12
JT.05.230	50	70 - 80	2	80	2	80	M12	M12
JT.05.240	50	90 - 100	2	80	2	80	M12	M12
JT.05.250	50	120	2	80	2	80	M12	M12
JT.05.260	50	140 -150	2	80	2	80	M12	M12
JT.05.310	60	30 - 40	2	80	2	74	M12	M10
JT.05.320	60	50 - 60	2	80	2	80	M12	M12
JT.05.330	60	70 - 80	2	80	2	80	M12	M12
JT.05.340	60	90 - 100	2	80	2	80	M12	M12
JT.05.350	60	120	2	80	2	80	M12	M12
JT.05.360	60	140 -150	2	80	2	80	M12	M12
JT.05.500	30	2"IPS (60,3mm)	2	80	2	82	M10	M12
JT.05.510	30	2,5"IPS (73mm)	2	80	2	82	M10	M12
JT.05.520	30	3"IPS (88,9mm)	2	80	2	82	M10	M12
JT.05.530	30	3,5"IPS (101,6mm)	2	80	2	82	M10	M12
JT.05.540	30	4"IPS (114,3mm)	2	80	2	82	M10	M12
JT.05.550	30	5"IPS (141,3mm)	2	80	2	82	M10	M12
JT.05.580	40	2"IPS (60,3mm)	2	80	2	82	M10	M12
JT.05.590	40	2,5"IPS (73mm)	2	80	2	82	M10	M12
JT.05.600	40	3"IPS (88,9mm)	2	80	2	82	M10	M12
JT.05.610	40	3,5"IPS (101,6mm)	2	80	2	82	M10	M12
JT.05.620	40	4"IPS (114,3mm)	2	80	2	82	M10	M12
JT.05.630	40	5"IPS (141,3mm)	2	80	2	82	M10	M12
JT.05.660	50	2"IPS (60,3mm)	2	80	2	82	M12	M12
JT.05.670	50	2,5"IPS (73mm)	2	80	2	82	M12	M12
JT.05.680	50	3"IPS (88,9mm)	2	80	2	82	M12	M12
JT.05.690	50	3,5"IPS (101,6mm)	2	80	2	82	M12	M12
JT.05.700	50	4"IPS (114,3mm)	2	80	2	82	M12	M12
JT.05.710	50	5"IPS (141,3mm)	2	80	2	82	M12	M12
JT.05.740	60	2"IPS (60,3mm)	2	80	2	82	M12	M12
JT.05.750	60	2,5"IPS (73mm)	2	80	2	82	M12	M12
JT.05.760	60	3"IPS (88,9mm)	2	80	2	82	M12	M12
JT.05.770	60	3,5"IPS (101,6mm)	2	80	2	82	M12	M12
JT.05.780	60	4"IPS (114,3mm)	2	80	2	82	M12	M12
JT.05.790	60	5"IPS (141,3mm)	2	80	2	82	M12	M12

ST01

CABLE - CABLE

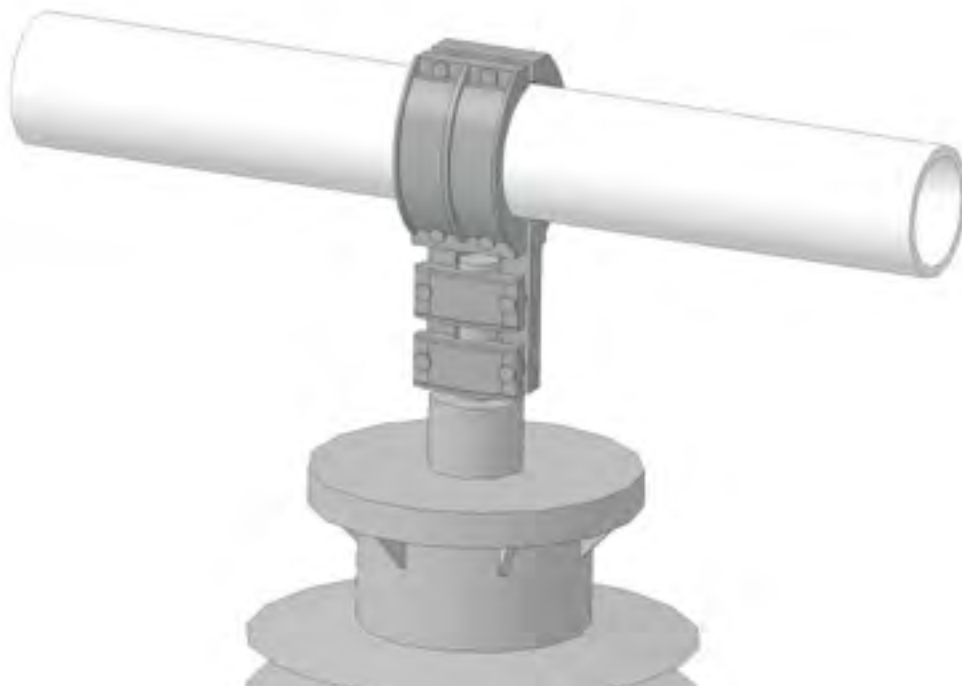


UP TO
400kV

BIMET
CUPAL or TIN

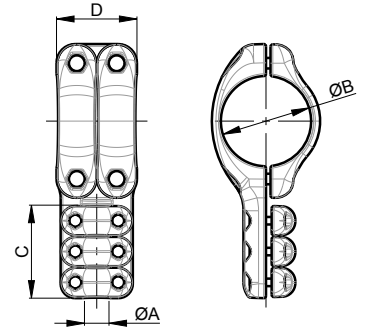
A2-70

PART NUMBER	A	B	COVERS A	C	COVERS B	D	BOLTS A	BOLTS B	CURRENT [A]
ST.01.010	16 - 24	16 - 24	2	72	2	72	M8	M8	800
ST.01.020	16 - 24	24 - 33	2	72	2	82	M8	M10	800
ST.01.030	16 - 24	33 - 45	2	72	2	82	M8	M10	800
ST.01.040	16 - 24	45 - 50	2	72	2	82	M8	M10	800
ST.01.050	24 - 33	16 - 24	2	82	2	72	M10	M8	800
ST.01.060	24 - 33	24 - 33	2	82	2	82	M10	M10	1250
ST.01.070	24 - 33	33 - 45	2	82	2	82	M10	M10	1250
ST.01.080	24 - 33	45 - 50	2	82	2	82	M10	M10	1250
ST.01.090	33 - 45	16 - 24	2	82	2	72	M10	M8	800
ST.01.100	33 - 45	24 - 33	2	82	2	82	M10	M10	1250
ST.01.110	33 - 45	33 - 45	3	123	3	123	M10	M10	1600
ST.01.120	33 - 45	45 - 50	3	123	3	123	M10	M10	1600
ST.01.130	45 - 50	16 - 24	2	82	2	72	M10	M8	800
ST.01.140	45 - 50	24 - 33	2	82	2	82	M10	M10	1250
ST.01.150	45 - 50	33 - 45	3	123	3	123	M10	M10	1600
ST.01.160	45 - 50	45 - 50	3	123	3	123	M10	M10	2000



ST02

CABLE - TUBE



UP TO
400kV

BIMET
CUPAL or TIN

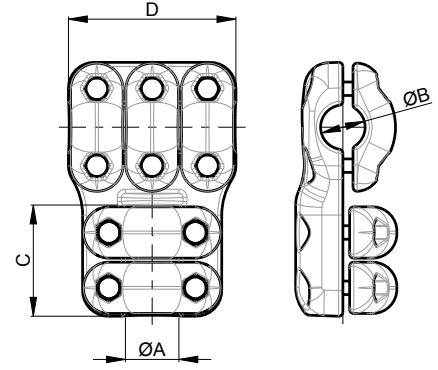
A2-70

PART NUMBER	A	B	COVERS A	C	COVERS B	D	BOLTS A	BOLTS B	FIG/CURRENT
ST.02.500	16 - 24	2"IPS (60,3mm)	2	72	2	92	M8	M12	800
ST.02.510	16 - 24	2,5"IPS (73mm)	2	72	2	92	M8	M12	800
ST.02.520	16 - 24	3"IPS (88,9mm)	2	72	2	92	M8	M12	800
ST.02.530	16 - 24	3,5"IPS (101,6mm)	2	72	2	92	M8	M12	800
ST.02.540	16 - 24	4"IPS (114,3mm)	2	72	2	106	M8	M14	800
ST.02.550	16 - 24	5"IPS (141,3mm)	2	72	2	106	M8	M14	800
ST.02.560	16 - 24	6"IPS (168,2mm)	2	72	2	106	M8	M14	800
ST.02.570	16 - 24	8"IPS (219mm)	2	72	2	116	M8	M16	800
ST.02.580	24 - 33	2"IPS (60,3mm)	3	123	2	92	M10	M12	1250
ST.02.590	24 - 33	2,5"IPS (73mm)	3	123	2	92	M10	M12	1250
ST.02.600	24 - 33	3"IPS (88,9mm)	3	123	2	92	M10	M12	1250
ST.02.610	24 - 33	3,5"IPS (101,6mm)	3	123	2	92	M10	M12	1250
ST.02.620	24 - 33	4"IPS (114,3mm)	3	123	2	106	M10	M14	1250
ST.02.630	24 - 33	5"IPS (141,3mm)	3	123	2	106	M10	M14	1250
ST.02.640	24 - 33	6"IPS (168,2mm)	3	123	2	106	M10	M14	1250
ST.02.650	24 - 33	8"IPS (219mm)	3	123	2	116	M10	M16	1250
ST.02.660	33 - 45	2"IPS (60,3mm)	3	123	2	92	M10	M12	1600
ST.02.670	33 - 45	2,5"IPS (73mm)	3	123	2	92	M10	M12	1600
ST.02.680	33 - 45	3"IPS (88,9mm)	3	123	2	92	M10	M12	1600
ST.02.690	33 - 45	3,5"IPS (101,6mm)	3	123	2	92	M10	M12	1600
ST.02.700	33 - 45	4"IPS (114,3mm)	3	123	2	106	M10	M14	1600
ST.02.710	33 - 45	5"IPS (141,3mm)	3	123	2	106	M10	M14	1600
ST.02.720	33 - 45	6"IPS (168,2mm)	3	123	2	106	M10	M14	1600
ST.02.730	33 - 45	8"IPS (219mm)	3	123	2	116	M10	M16	1600
ST.02.740	45 - 50	2"IPS (60,3mm)	3	123	2	92	M10	M12	2000
ST.02.750	45 - 50	2,5"IPS (73mm)	3	123	2	92	M10	M12	2000
ST.02.760	45 - 50	3"IPS (88,9mm)	3	123	2	92	M10	M12	2000
ST.02.770	45 - 50	3,5"IPS (101,6mm)	3	123	2	92	M10	M12	2000
ST.02.780	45 - 50	4"IPS (114,3mm)	3	123	2	106	M10	M14	2000
ST.02.790	45 - 50	5"IPS (141,3mm)	3	123	2	106	M10	M14	2000
ST.02.800	45 - 50	6"IPS (168,2mm)	3	123	2	106	M10	M14	2000
ST.02.810	45 - 50	8"IPS (219mm)	3	123	2	116	M10	M16	2000



ST03

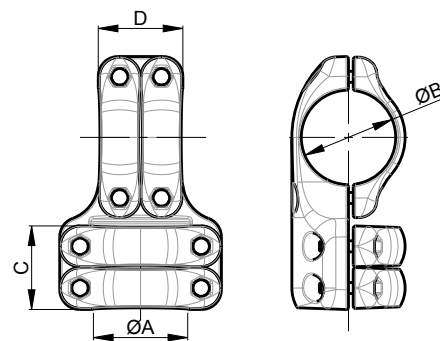
STUD - CABLE



PART NUMBER	A	B	COVERS A	C	COVERS B	D	BOLTS A	BOLTS B
ST.03.010	30	16 - 24	2	82	2	72	M10	M8
ST.03.020	30	24 - 33	2	82	2	82	M10	M10
ST.03.030	30	33 - 45	2	82	3	123	M10	M10
ST.03.040	30	45 - 50	2	82	3	123	M10	M10
ST.03.050	40	16 - 24	2	82	2	72	M10	M8
ST.03.060	40	24 - 33	2	82	2	82	M10	M10
ST.03.070	40	33 - 45	2	82	3	123	M10	M10
ST.03.080	40	45 - 50	2	82	3	123	M10	M10
ST.03.090	50	16 - 24	2	92	2	72	M12	M8
ST.03.100	50	24 - 33	2	92	2	82	M12	M10
ST.03.110	50	33 - 45	2	92	3	123	M12	M10
ST.03.120	50	45 - 50	2	92	3	123	M12	M10
ST.03.130	60	16 - 24	2	92	2	72	M12	M8
ST.03.140	60	24 - 33	2	92	2	82	M12	M10
ST.03.150	60	33 - 45	2	92	3	123	M12	M10
ST.03.160	60	45 - 50	2	92	3	123	M12	M10

ST04

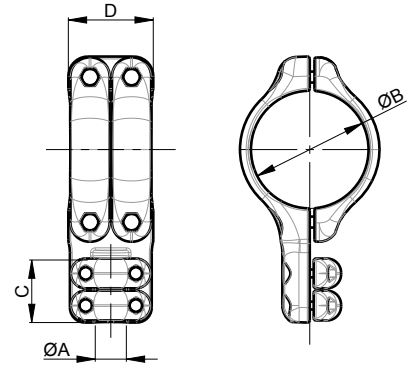
TUBE - TUBE



PART NUMBER	A	B	COVERS A	C	COVERS B	D	BOLTS A	BOLTS B
ST.04.010	30 - 40	30 - 40	2	82	2	82	M10	M10
ST.04.020	50 - 60	50 - 60	2	92	2	92	M12	M12
ST.04.030	70 - 80	70 - 80	2	92	2	92	M12	M12
ST.04.040	90 - 100	90 - 100	2	92	2	92	M12	M12
ST.04.050	120	120	2	106	2	106	M14	M14
ST.04.060	140 -150	140 -150	2	106	2	106	M14	M14
ST.04.070	160-170	160-170	2	106	2	106	M14	M14
ST.04.080	200	200	3	174	3	174	M16	M16
ST.04.090	250	250	3	174	3	174	M16	M16
ST.04.100	300	300	3	174	3	174	M16	M16
ST.04.500	2"IPS (60,3mm)	2"IPS (60,3mm)	2	92	2	92	M12	M12
ST.04.510	2,5"IPS (73mm)	2,5"IPS (73mm)	2	92	2	92	M12	M12
ST.04.520	3"IPS (88,9mm)	3"IPS (88,9mm)	2	92	2	92	M12	M12
ST.04.530	3,5"IPS (101,6mm)	3,5"IPS (101,6mm)	2	92	2	92	M12	M12
ST.04.540	4"IPS (114,3mm)	4"IPS (114,3mm)	2	106	2	106	M14	M14
ST.04.550	5"IPS (141,3mm)	5"IPS (141,3mm)	2	106	2	106	M14	M14
ST.04.560	6"IPS (168,2mm)	6"IPS (168,2mm)	2	106	2	106	M14	M14
ST.04.570	8"IPS (219mm)	8"IPS (219mm)	3	174	3	174	M16	M16

ST05

STUD - TUBE



PART NUMBER	A	B	COVERS A	C	COVERS B	D	BOLTS A	BOLTS B
ST.05.010	30	30 - 40	2	82	2	82	M10	M10
ST.05.020	30	50 - 60	2	82	2	92	M10	M12
ST.05.030	30	70 - 80	2	82	2	92	M10	M12
ST.05.040	30	90 - 100	2	82	2	92	M10	M12
ST.05.050	30	120	2	82	2	106	M10	M14
ST.05.060	30	140 -150	2	82	2	106	M10	M14
ST.05.070	30	160-170	2	82	2	106	M10	M14
ST.05.080	30	200	2	82	2	116	M10	M16
ST.05.090	30	250	2	82	2	116	M10	M16
ST.05.100	30	300	2	82	2	116	M10	M16
ST.05.110	40	30 - 40	2	82	2	82	M10	M10
ST.05.120	40	50 - 60	2	82	2	92	M10	M12
ST.05.130	40	70 - 80	2	82	2	92	M10	M12
ST.05.140	40	90 - 100	2	82	2	92	M10	M12
ST.05.150	40	120	2	82	2	106	M10	M14
ST.05.160	40	140 -150	2	82	2	106	M10	M14
ST.05.170	40	160-170	2	82	2	106	M10	M14
ST.05.180	40	200	2	82	2	116	M10	M16
ST.05.190	40	250	2	82	2	116	M10	M16
ST.05.200	40	300	2	82	2	116	M10	M16
ST.05.210	50	30 - 40	2	92	2	82	M12	M10
ST.05.220	50	50 - 60	2	92	2	92	M12	M12
ST.05.230	50	70 - 80	2	92	2	92	M12	M12
ST.05.240	50	90 - 100	2	92	2	92	M12	M12
ST.05.250	50	120	2	92	2	106	M12	M14
ST.05.260	50	140 -150	2	92	2	106	M12	M14
ST.05.270	50	160-170	2	92	2	106	M12	M14
ST.05.280	50	200	2	92	2	116	M12	M16
ST.05.290	50	250	2	92	2	116	M12	M16
ST.05.300	50	300	2	92	2	116	M12	M16
ST.05.310	60	30 - 40	2	92	2	82	M12	M10
ST.05.320	60	50 - 60	2	92	2	92	M12	M12
ST.05.330	60	70 - 80	2	92	2	92	M12	M12
ST.05.340	60	90 - 100	2	92	2	92	M12	M12
ST.05.350	60	120	2	92	2	106	M12	M14
ST.05.360	60	140 -150	2	92	2	106	M12	M14
ST.05.370	60	160-170	2	92	2	106	M12	M14
ST.05.380	60	200	2	92	2	116	M12	M16
ST.05.390	60	250	2	92	2	116	M12	M16
ST.05.400	60	300	2	92	2	116	M12	M16

